

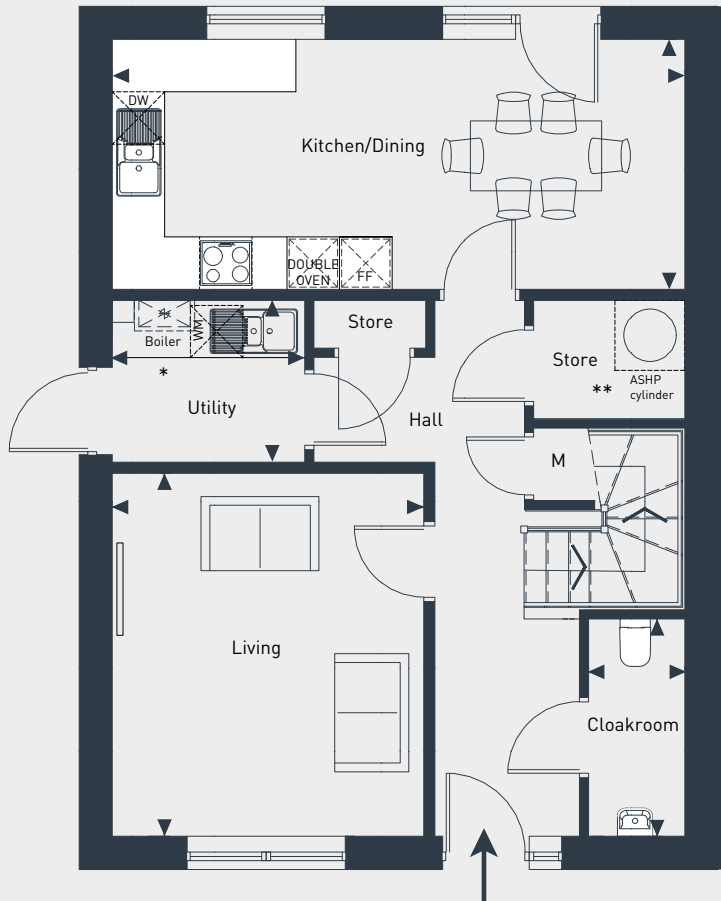
Firth View

McClure 4 bedroom home

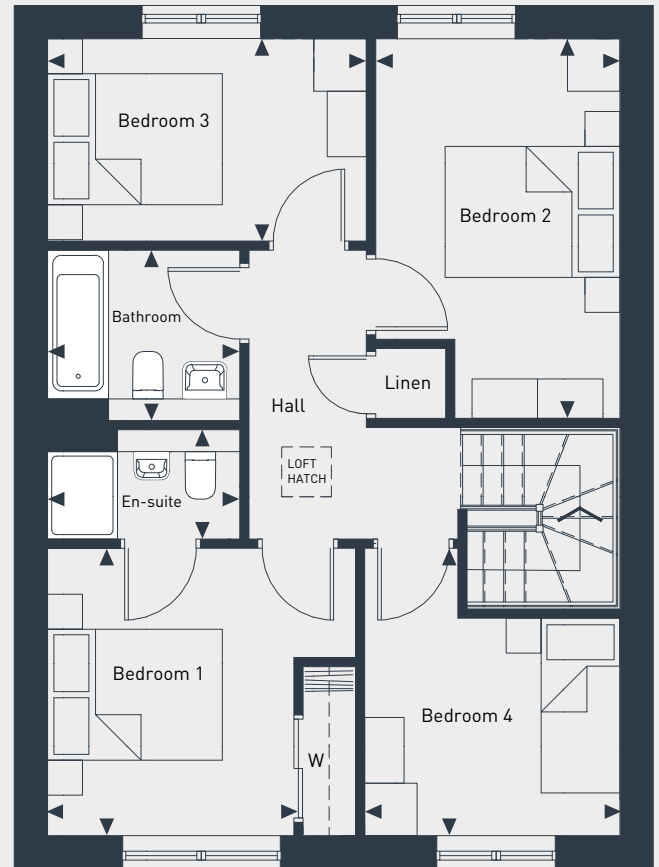
Plots 4*, 5, 56* & 57*

121 sq m / 1285 sq ft

* Plots 4, 56 & 57 are handed to plan drawn



GROUND FLOOR



FIRST FLOOR

*Please note that some plots have a boiler or larder in this location. ** Please note not all plots have ashp.

DIMENSIONS	m	ft
Kitchen/Dining	6.6m x 2.9m	21'8" x 9'6"
Living	4.2m x 3.6m	13'9" x 11'10"
Cloakroom	2.5m x 1.1m	8'3" x 3'7"
Bathroom	2.2m x 2.0m	7'3" x 6'6"
Utility	2.2m x 1.9m	7'3" x 6'3"

DIMENSIONS	m	ft
Bedroom 1	3.3m x 2.8m	10'10" x 9'2"
Bedroom 2	4.3m x 2.8m	14'1" x 9'2"
Bedroom 3	3.7m x 2.3m	12'2" x 7'7"
Bedroom 4	3.3m x 2.9m	10'10" x 9'6"
En-suite	2.2m x 1.3m	7'3" x 4'3"



07880458334 | placesforpeople.co.uk/new-homes/find-a-new-home/firth-view

Please note: All layouts and floor plans, configurations, maps and information are intended for guidance only and accuracy of this information cannot be relied upon by prospective purchasers who must make their own enquiries to satisfy themselves by inspection or otherwise as to the correct detail. Sizes and dimensions approximate and subject to change.